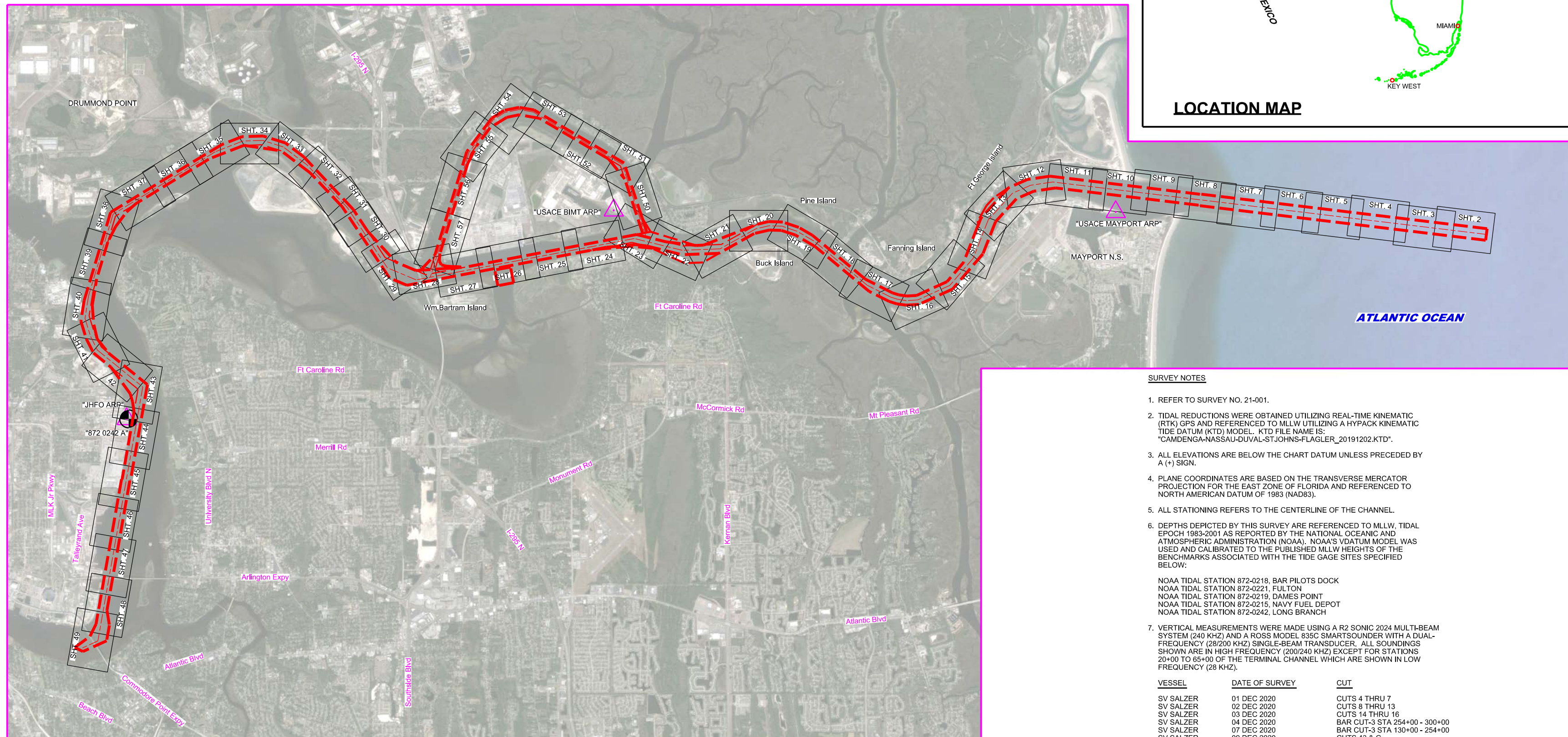


JACKSONVILLE HARBOR, FLORIDA

ANNUAL EXAM SURVEY FY21



SURVEY NOTES

- REFER TO SURVEY NO. 21-001.
- TIDAL REDUCTIONS WERE OBTAINED UTILIZING REAL-TIME KINEMATIC (RTK) GPS AND REFERENCED TO MLLW UTILIZING A HYPACK KINEMATIC TIDE DATUM (KTD) MODEL. KTD FILE NAME IS: "CAMDENGA-NASSAU-DUVAL-STJOHNS-FLAGLER_20191202.KTD".
- ALL ELEVATIONS ARE BELOW THE CHART DATUM UNLESS PRECEDED BY A (+) SIGN.
- PLANE COORDINATES ARE BASED ON THE TRANSVERSE MERCATOR PROJECTION FOR THE EAST ZONE OF FLORIDA AND REFERENCED TO NORTH AMERICAN DATUM OF 1983 (NAD83).
- ALL STATIONING REFERS TO THE CENTERLINE OF THE CHANNEL.
- DEPTHS DEPICTED BY THIS SURVEY ARE REFERENCED TO MLLW, TIDAL EPOCH 1983-2001 AS REPORTED BY THE NATIONAL OCEANIC AND ATMOSPHERIC ADMINISTRATION (NOAA). NOAA'S VDUTUM MODEL WAS USED AND CALIBRATED TO THE PUBLISHED MLLW HEIGHTS OF THE BENCHMARKS ASSOCIATED WITH THE TIDE GAGE SITES SPECIFIED BELOW:

NOAA TIDAL STATION 872-0218, BAR PILOTS DOCK
 NOAA TIDAL STATION 872-0221, FULTON
 NOAA TIDAL STATION 872-0219, DAMES POINT
 NOAA TIDAL STATION 872-0215, NAVY FUEL DEPOT
 NOAA TIDAL STATION 872-0242, LONG BRANCH

- VERTICAL MEASUREMENTS WERE MADE USING A R2 SONIC 2024 MULTI-BEAM SYSTEM (240 KHZ) AND A ROSS MODEL 835C SMARTSOUNDER WITH A DUAL-FREQUENCY (28/200 KHZ) SINGLE-BEAM TRANSDUCER. ALL SOUNDINGS SHOWN ARE IN HIGH FREQUENCY (200/240 KHZ) EXCEPT FOR STATIONS 20+00 TO 65+00 OF THE TERMINAL CHANNEL WHICH ARE SHOWN IN LOW FREQUENCY (28 KHZ).

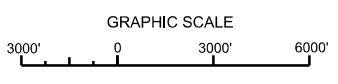
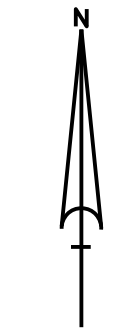
VESSEL	DATE OF SURVEY	CUT
SV SALZER	01 DEC 2020	CUTS 4 THRU 7
SV SALZER	02 DEC 2020	CUTS 8 THRU 13
SV SALZER	03 DEC 2020	CUTS 14 THRU 16
SV SALZER	04 DEC 2020	BAR CUT-3 STA 254+00 - 300+00
SV SALZER	07 DEC 2020	BAR CUT-3 STA 130+00 - 254+00
SV SALZER	09 DEC 2020	CUTS 43 & G
SV SALZER	10 DEC 2020	BAR CUT-3 STA 0+00 - 130+00
SV SALZER	15 DEC 2020	CUT-F, PORTION OF CUT-42
SV SALZER	16 DEC 2020	CUT-41, PORTION OF CUT-42
SV SALZER	17 DEC 2020	CUT-40
SV SALZER	21 DEC 2020	CUTS 17-19, 39
SV SALZER	22 DEC 2020	CUTS A & B
SV SALZER	02 NOV 2020	CUTS 49-50
SV SALZER	03 NOV 2020	CUTS 45-48
SV SALZER	17 NOV 2020	CUT-44, PORTION OF CUT-45
SV SALZER	16 NOV 2020	LTC STA 25+00 - 67+00
SV SALZER	29 OCT 2020	CUTS 51-54
SV SALZER	27 OCT 2020	CUT-55, PORTION OF UTC
SV SALZER	22 OCT 2020	PORTIONS OF LTC & UTC
SV SALZER	21 OCT 2020	LTC

- THIS SURVEY WAS PERFORMED USING REAL-TIME KINEMATIC (RTK) GPS POSITIONING WITH THE FOLLOWING REFERENCE BASE LOCATIONS:
 REFERENCE BASE LOCATED AT "USACE MAYPORT ARP" (OPUS PID: BBGZ80)
 REFERENCE BASE LOCATED AT "USACE BIMT ARP" (OPUS PID: BBGM25)
 REFERENCE BASE LOCATED AT "USACE JHFO ARP" (OPUS PID: BBGL18)

- AIDS TO NAVIGATION WERE LOCATED DURING THIS SURVEY.
- THE INFORMATION DEPICTED ON THIS MAP REPRESENTS THE RESULTS OF SURVEYS MADE ON THE DATES INDICATED ABOVE AND CAN ONLY BE CONSIDERED AS INDICATING THE GENERAL CONDITIONS AT THAT TIME. THIS CHART IS SOLELY FOR THE DISTRIBUTION OF AVAILABLE DEPTHS AT THE TIME OF THE SURVEY.
- SURVEY ACCURACY PERFORMANCE STANDARDS, QUALITY CONTROL, AND QUALITY ASSURANCE REQUIREMENTS WERE FOLLOWED DURING THIS SURVEY IN ACCORDANCE WITH USACE EM 1110-2-1003, HYDROGRAPHIC SURVEYING, 30 NOV 2013.

AUTHORIZED PROJECT DEPTH	
42 FT	CUT - 3 (BAR CUT), STA. 0+00 THRU STA. 210+00
40 FT	CUT - 3 (BAR CUT) STA. 210+00 THRU TERMINAL CHANNEL STA. 65+00.
34 FT	TERMINAL CHANNEL, STA. 65+00 THRU STA. 186+21 (APPROX. 1200 FEET UPSTREAM FROM THE HART BRIDGE NEAR COMMODORE POINT).
30 FT	CUT-A, STA. 0+00 THRU 53+10.21
38 FT	OLD RIVER BLOUNT ISLAND (WESTSIDE) CHANNEL CUT-F, STA. 10+00 - NEAR WOODEN FISHING BRIDGE PIER THRU INTERSECTION OF CUT - 42 (DAMES PT. - FULTON CUT - OFF

LEGEND	
	MONUMENT
	LIGHTED BEACON
	GREEN DAYBEACON
	RED DAYBEACON
	RED LIGHTED BUOY
	GREEN LIGHTED BUOY
	CAN BUOY
	NUN BUOY
	TIDE STAFF
	PROJECT DEPTH



US Army Corps of Engineers
 Jacksonville District
 SAFETY ON THIS JOB
 DEPENDS ON YOU

DEPARTMENT OF THE ARMY
 JACKSONVILLE DISTRICT, CORPS OF ENGINEERS
 JACKSONVILLE, FLORIDA

DESIGNED BY: GHR
 DRAWN BY: GHR
 CHECKED BY: GHR
 DATE: DEC 2020

JACKSONVILLE HARBOR, FLORIDA
ANNUAL EXAMINATION SURVEY FY21
30, 34, 38, 40 & 42-FOOT PROJECT
 INDEX, LOCATION AND VICINITY
MAP

Scale: AS SHOWN
 Drawing no. **1**
 SHEET 01 OF 57

10 9 8 7 6 5 4 3 2 1

F
E
D
C
B
A

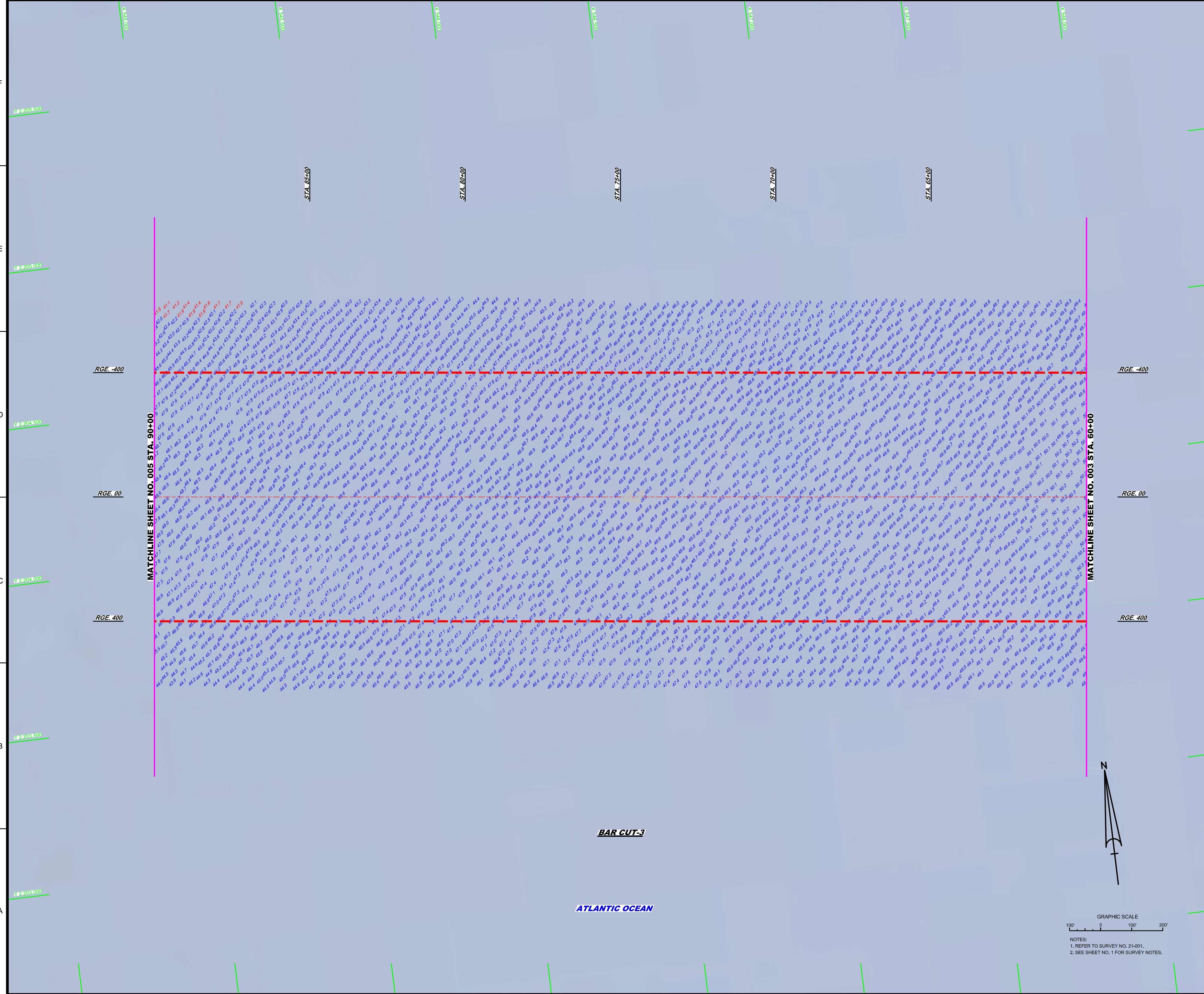
US Army Corps of Engineers
Jacksonville District
SAFETY ON THIS JOB
DEPENDS ON YOU

DEPARTMENT OF THE ARMY
JACKSONVILLE DISTRICT, CORPS OF ENGINEERS
JACKSONVILLE, FLORIDA

Designed by: **VRM**
Checked by: **GHR**
Drawn by: **VRM**
In Charge: **VRM**
Date: **DEC 2020**

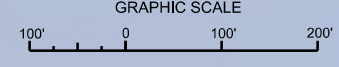
JACKSONVILLE HARBOR, FLORIDA
**ANNUAL EXAMINATION SURVEY FY21
30, 34, 38, 40 & 42-FOOT PROJECT**
STA. 60+00 THRU STA. 99+00 BAR CUT-3
PLAN

Scale: AS SHOWN
Drawing no. **4**
SHEET 04 OF 57

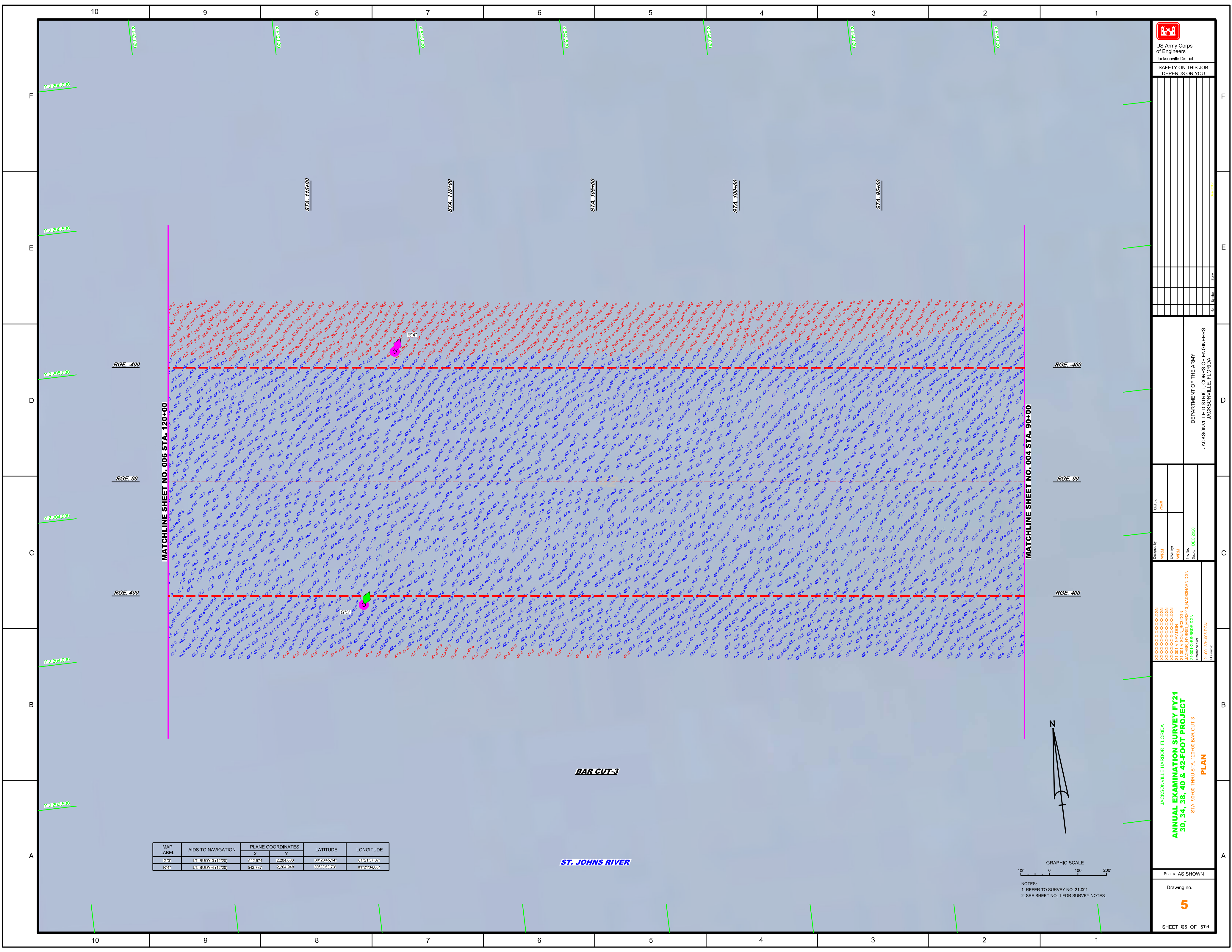


BAR CUT-3

ATLANTIC OCEAN



NOTES:
1. REFER TO SURVEY NO. 21-001.
2. SEE SHEET NO. 1 FOR SURVEY NOTES.



MAP LABEL	AIDS TO NAVIGATION	PLANE COORDINATES		LATITUDE	LONGITUDE
		X	Y		
C*	LT BUOY-1 (1220)	542,574	2,204,680	30°23'45.14"	81°21'37.07"
R4*	LT BUOY-4 (1220)	542,787	2,204,948	30°23'53.73"	81°21'34.66"

ST. JOHNS RIVER

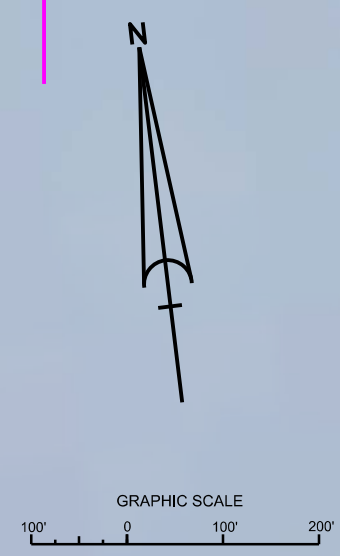
BAR CUT-3

US Army Corps of Engineers
Jacksonville District
SAFETY ON THIS JOB
DEPENDS ON YOU

DEPARTMENT OF THE ARMY
JACKSONVILLE DISTRICT, CORPS OF ENGINEERS
JACKSONVILLE, FLORIDA

Designed by: WRM
Checked by: GHR
Drawn by: WRM
Reviewed by: WRM
Date: DEC 2020

JACKSONVILLE HARBOR, FLORIDA
**ANNUAL EXAMINATION SURVEY FY21
30, 34, 38, 40 & 42-FOOT PROJECT**
STA. 90+00 THRU STA. 120+00 BAR CUT-3
PLAN



Scale: AS SHOWN
Drawing no. **5**
SHEET 5 OF 54

NOTES:
1. REFER TO SURVEY NO. 21-001
2. SEE SHEET NO. 1 FOR SURVEY NOTES.

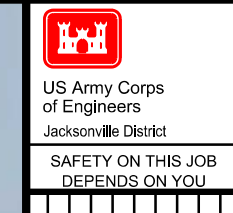


Table with grid coordinates and stationing information.

DEPARTMENT OF THE ARMY
JACKSONVILLE DISTRICT, CORPS OF ENGINEERS
JACKSONVILLE, FLORIDA

Table with columns: Check By, GHR, Designated By, WRM, DWM, WRM, WRM, Date, DEC 2020, Reference Map, 210014R07.DGN.

JACKSONVILLE HARBOR, FLORIDA
ANNUAL EXAMINATION SURVEY FY21
30, 34, 38, 40 & 42-FOOT PROJECT
STA. 150+00 THRU STA. 180+00 BAR CUT-3
PLAN

MATCHLINE SHEET NO. 008 STA. 180+00

MATCHLINE SHEET NO. 006 STA. 150+00

STA. 175+00

STA. 170+00

STA. 165+00

STA. 160+00

STA. 155+00

RGE -400

RGE -400

RGE 00

RGE 00

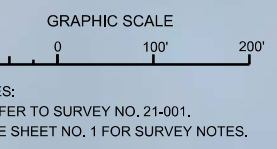
RGE 400

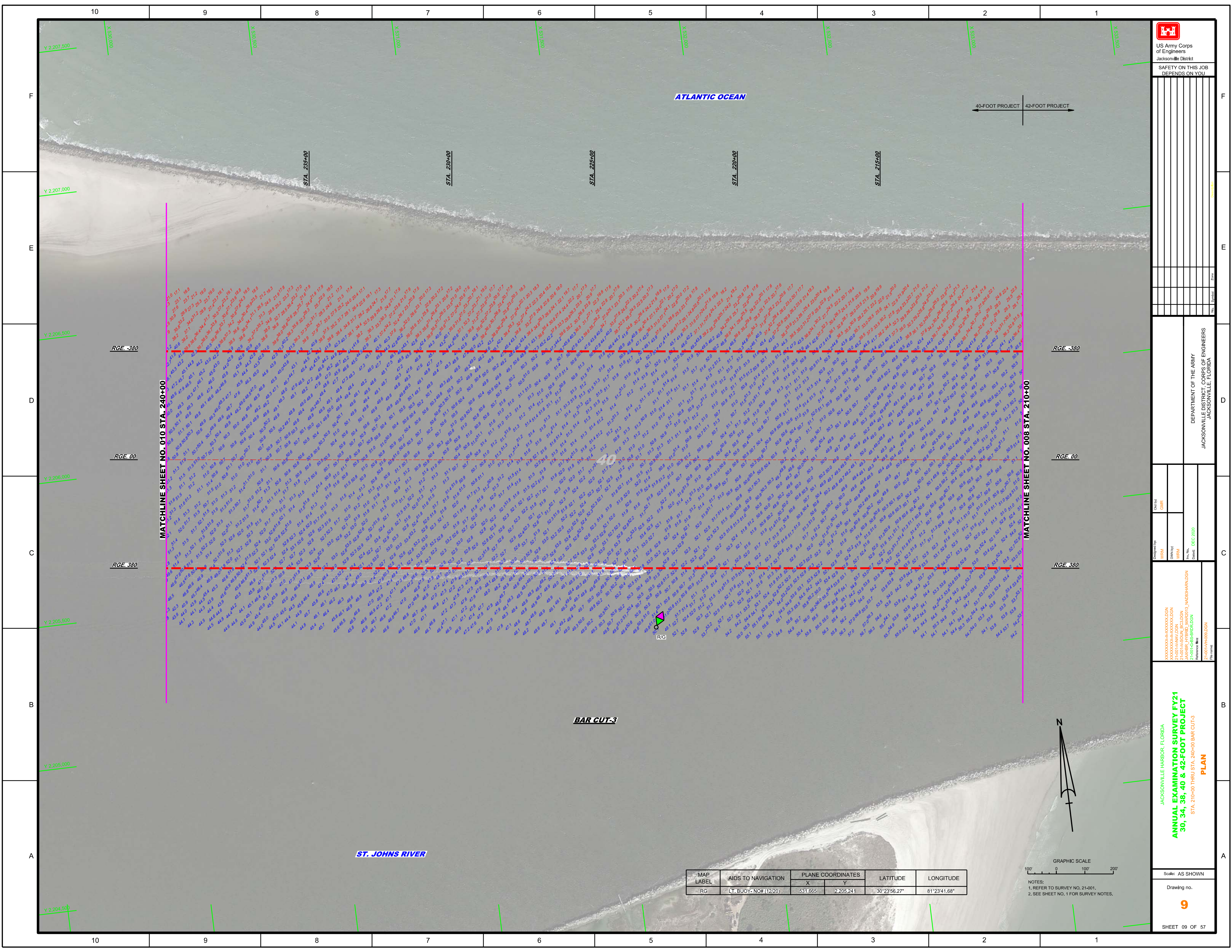
RGE 400

BAR CUT-3

ST. JOHNS RIVER

MAP LABEL	AIDS TO NAVIGATION	PLANE COORDINATES		LATITUDE	LONGITUDE
		X	Y		
G5*	LT-BUOY-5 (1220)	538,440	2,204,222	30°23'46.41"	81°22'24.28"
R6*	LT-BUOY-6 (1220)	538,460	2,205,588	30°23'59.93"	81°22'24.10"





US Army Corps of Engineers

 Jacksonville District

 SAFETY ON THIS JOB

 DEPENDS ON YOU

DEPARTMENT OF THE ARMY

 JACKSONVILLE DISTRICT, CORPS OF ENGINEERS

 JACKSONVILLE, FLORIDA

Designed by: WRM
 Checked by: GHR
 Drawn by: WRM
 Date: DEC 2020

JACKSONVILLE HARBOR, FLORIDA

ANNUAL EXAMINATION SURVEY FY21

30, 34, 38, 40 & 42-FOOT PROJECT

 STA. 210+00 THRU STA. 240+00 BAR CUT-3

PLAN

Scale: AS SHOWN

 Drawing no.

9

 SHEET 09 OF 57

MAP LABEL	AIDS TO NAVIGATION	PLANE COORDINATES		LATITUDE	LONGITUDE
		X	Y		
RG	LT, BUOY-NO# (12/20)	531,665	2,205,241	30°23'56.27"	81°23'41.68"

GRAPHIC SCALE

 100' 0 100' 200'

 NOTES:

 1. REFER TO SURVEY NO. 21-001,

 2. SEE SHEET NO. 1 FOR SURVEY NOTES.

